

COMMUNITY HIGHLIGHT: VILLAGE OF SMITHFIELD, OH

The mayor of Smithfield, Ohio, Nicole Pflug, describes the village as a "sleepy little town." She quickly points out, however, that it is the ideal place to raise a family. Apparently, those who live there feel the same. Census records show the number of residents in 2000 at 867 which is just one less than in 1991.

Ms. Pflug, who was sworn in as mayor last October, takes great pride in the village. She says her goal is to create more interest in the village. It's a great place for recreation boasting three ball fields and a wonderful park with playground equipment and tennis courts.



Mayor Pflug and 3-year old son, Jared

ally the last weekend of September. It's the ideal time to walk through the village and experience a little of the history Smithfield has to offer.



Site of Custer's First Teaching Position

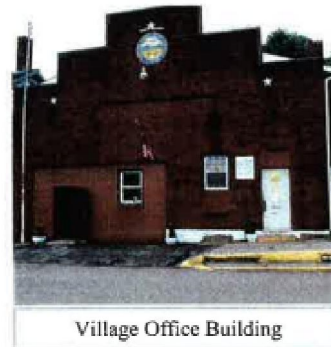
The mayor considers Smithfield a "hub" of Steubenville, and it most definitely has contributed to the history of Jefferson County!

The village is in the midst of a road paving project. Thus far, three roads have been paved with four additional scheduled in the next few months.



Smithfield may be small in population and size, but it is big in history. As you walk along the main street you see many old buildings dating back to the 1800's. In fact, one such building is where George Custer taught for the first time.

The village was an important part of the Underground Railroad. One of the farm houses used for hiding slaves still stands. Smithfield was once a booming mining town, and is still well-known for its apple crops. In fact, area residents can enjoy the Apple Festival held annu-



Village Office Building

WAL-MART DISTRIBUTION CENTER BRINGS ROAD IMPROVEMENTS TO STATE ROUTE 43



The opening of the Wal-Mart Distribution Center just outside of Wintersville, Ohio, has brought not only new 650 new jobs, but also many changes to State Route 43. The road has been widened to make a turning lane for trucks at the entrance. Traffic lights have been put in place at the truck entrance and the intersection of County Road 45 and State Route 43.

It is estimated the opening of the distribution center will eventually create a daily influx of 1,900 trucks per day plus the employees. Congestion from this traffic flow is expected to be extremely heavy necessitating further improvements to State Route 43. Phase II of the project will consist of improvements to the US 22/SR 43 interchange to include widening of the ramps and State Route 43, as well as signalization. Construction is being funded by DOD plus district funds totaling \$650,000. Construction is expected to be completed this calendar year.

